

AUCTION

SAT., AUG. 13TH 10:30 AM

5) RESTRICTED LOTS

ZONED R2



Triangle Road, Johnson City

Directions: From University Parkway turn onto Cherokee Road, go approx. 1.5 miles to Triangle Rd. turn left. Go approx. 1.5 miles, property on left watch for signs.

Land: 5) restricted building lots ranging from .345 to .527+/-acres. The topography of these lots is level to gently rolling, utility water/sewer is available, and zoned R2 being Low Density Residential District.

Terms: 5% down day of auction balance in 30 days. A 5% buyers' premium will apply.

Note: Excellent Location! These beautiful lots (with some woods) offer peaceful surroundings yet being convenient to Cherokee Elementary School and all major hubs, including ETSU, JC Medical Center and VA . Don't let this opportunity pass you by. Visit our website at www.etdac.com/triangle to take a video tour.

Sale Conducted For the Owners by



EAST TENNESSEE DEVELOPMENT & AUCTION CO.

2909 E. OAKLAND AVE. SUITE 103/PO BOX 4684

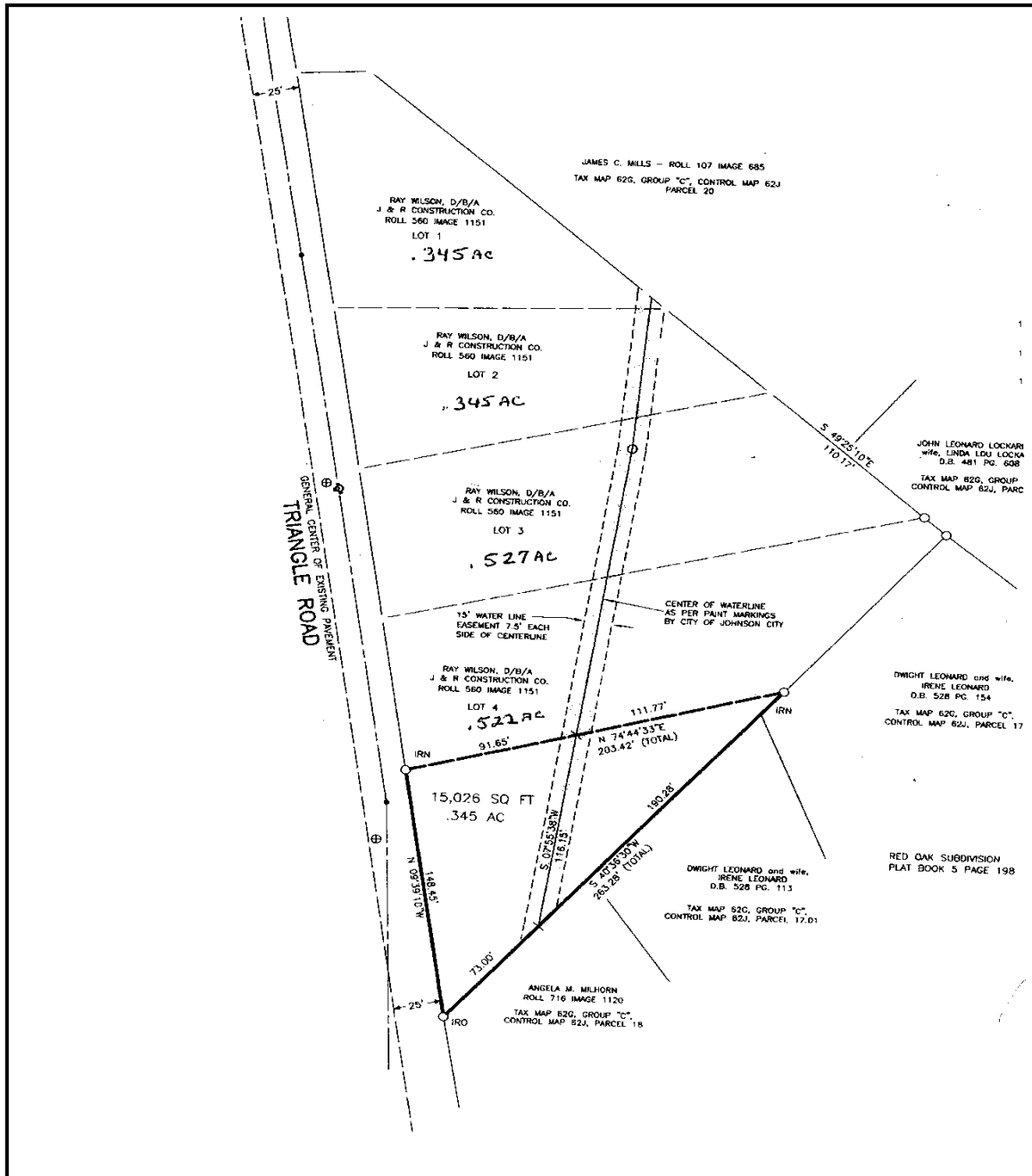
JOHNSON CITY, TN 37602

423-854-4999 www.etdac.com

AUCTION

SAT. AUG. 13TH 10:30 AM

RESTRICTED LOTS ZONED R2



Announcements made day of sale take precedence over all others