

AUCTION

SAT., MAY 21 10:30 AM
10 UNIT APT. COMPLEX



169 E. GRANDE AVENUE, JOHNSON CITY

Directions: In Johnson City take South Roan Street to E. Highland Ave. turn onto E Maple St. (becomes E. Grande Ave.) turn right, watch for signs.

Improvements: 3 buildings containing 10 units that will be offered as a whole. Each unit contains 2 bedrooms, 2 baths, large closets, neutral color scheme, modern kitchen w/stove, refrigerator, microwave, dishwasher, beautiful cabinetry, large living room, CH&A, carpet & tile flooring, washer/dryer connection, public utilities, paved parking, grassy common area and 1 car garage, situated on a dead end street. **Take a video tour at www.etchedac.com/grande**

Terms: 10% down day of auction balance in 30 days. A 5% buyers' premium will apply.

Note: Excellent Income Potential! Prime Business Opportunity! This property is conveniently located, only minutes from ETSU, JC MED Center, VA, and I-26. Come join us for the

OPEN HOUSE AND PREVIEW SUN MAY 15TH FROM 2 – 4 PM



Sale Conducted by

EAST TENNESSEE DEVELOPMENT & AUCTION CO.

2909 E. OAKLAND AVE. SUITE 103/PO BOX 4684

JOHNSON CITY, TN 37602

423-854-4999 www.etchedac.com Firm 28

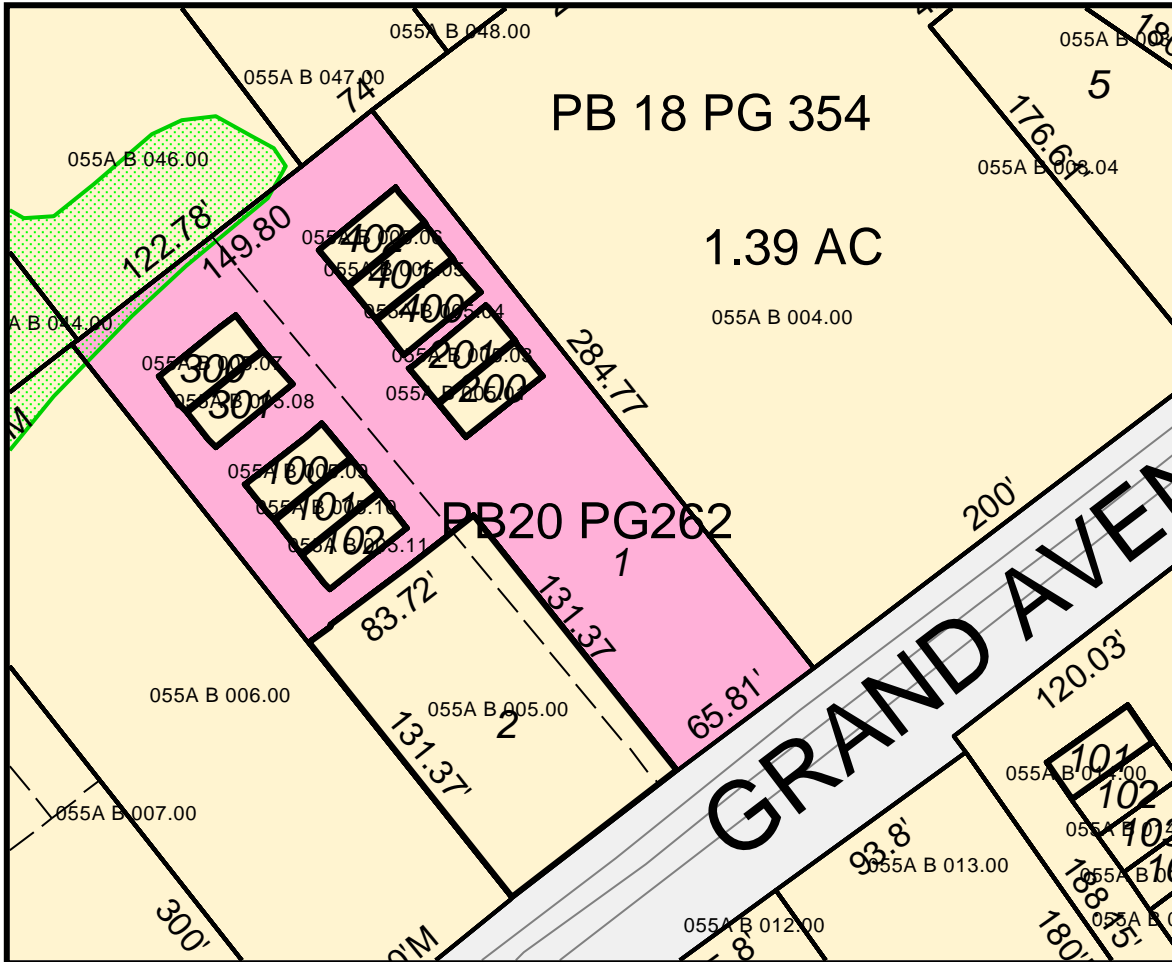
Announcements made day of sale take precedence over all others

AUCTION

SAT MAY 21st 10:30 AM

10 UNIT APT COMPLEX

169 E. Grande Ave., Johnson City, TN



TAKE A VIDEO TOUR ETDAC.COM/GRANDE

Bedroom



Kitchen



Announcements made day of sale take precedence over all others