

AUCTION

SAT., OCT. 1ST 10:30 A.M.

(3) HOUSES & LOTS

ELIZABETHTON, TN



**1500 Garden Rd.
848 Sq. Ft.**



**1502 Garden Rd.
984+/- Sq. Ft.**



**1504 Garden Rd.
1008+/- Sq. Ft.**

Directions: In Elizabethton from West G Street turn onto Parkway Blvd. then left on Garden Rd houses on right. Watch for signs.

Improvements: (3) neat one level homes containing up to 1008 +/-sq. ft. built in 2010. Each house has virtually the same floor plan with 2 bedrooms w/walk in closets, 1 or 2 baths, living room, modern kitchen w/stove, microwave, and dishwasher, central heat/air, carpet/vinyl flooring, washer/dryer connection, front/back or side porches, 1 car garage and city utilities. The homes are situated on lots (50' x 125) that are easily maintained.

Terms: 5% down day of auction balance in 30 days. A 5% buyers' premium will apply.

Note: Attention Investors, First Time Home Buyers, Retirees, or those looking to downsize. These homes are what you've been looking for, single level living all conveniently located. Take a video tour of these properties at www.etcac.com/1500 , www.etcac.com/1502 , www.etcac.com/1504 . Don't let this opportunity pass you by!

OPEN HOUSE SUN. SEPT 25TH 2 – 4 PM

Sale Conducted For the Owners by

EAST TENNESSEE DEVELOPMENT & AUCTION CO.

2909 E. OAKLAND AVE. SUITE 103/PO BOX 4684

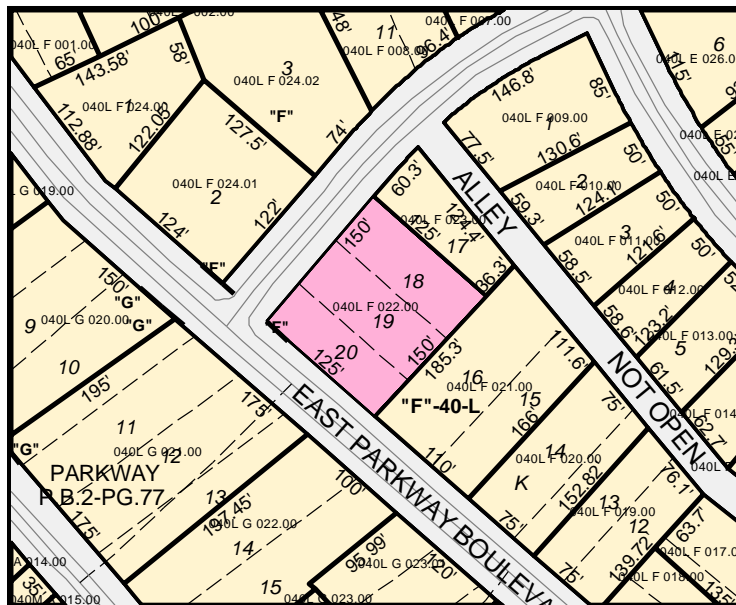
JOHNSON CITY, TN 37602

423-854-4999 www.etcac.com



AUCTION

SAT. OCT. 1ST 10:30 AM
1500, 1502, 1504 GARDEN RD
ELIZABETHTON, TN



Announcements made day of sale take precedence over all others