

ABSOLUTE AUCTION
SAT., OCT. 15TH 11:00 AM
DOUBLEWIDE ON PRIVATE LOT



615 CLAIRMONT RD., JOHNSON CITY, TN

Directions: From Johnson City take Watauga Road to Johnson City Airport, turn right on Clairmont Road, go approx. one quarter mile property on right. Watch for signs.

Improvements: A neat 4 bedroom 2 bath doublewide containing approx. 1500 square feet of living area situated on approx. a half acre private lot. Features include eat in kitchen w/island, nice cabinetry, stove, dishwasher & refrigerator; large living room, master bath w/garden tub, central heat/air, carpet/vinyl flooring, city utilities, and is within walking distance to city bus line.

Terms: 10% down day of auction balance in 30 days. NO buyers' premium.

Note: Ideal for first time home buyers or for those looking to downsize. This property offers a great investment opportunity and **WILL BE SOLD TO THE HIGHEST BIDDER**. Don't let this miss this auction!

OPEN HOUSE SUN. OCT. 9TH FROM 2 - 4

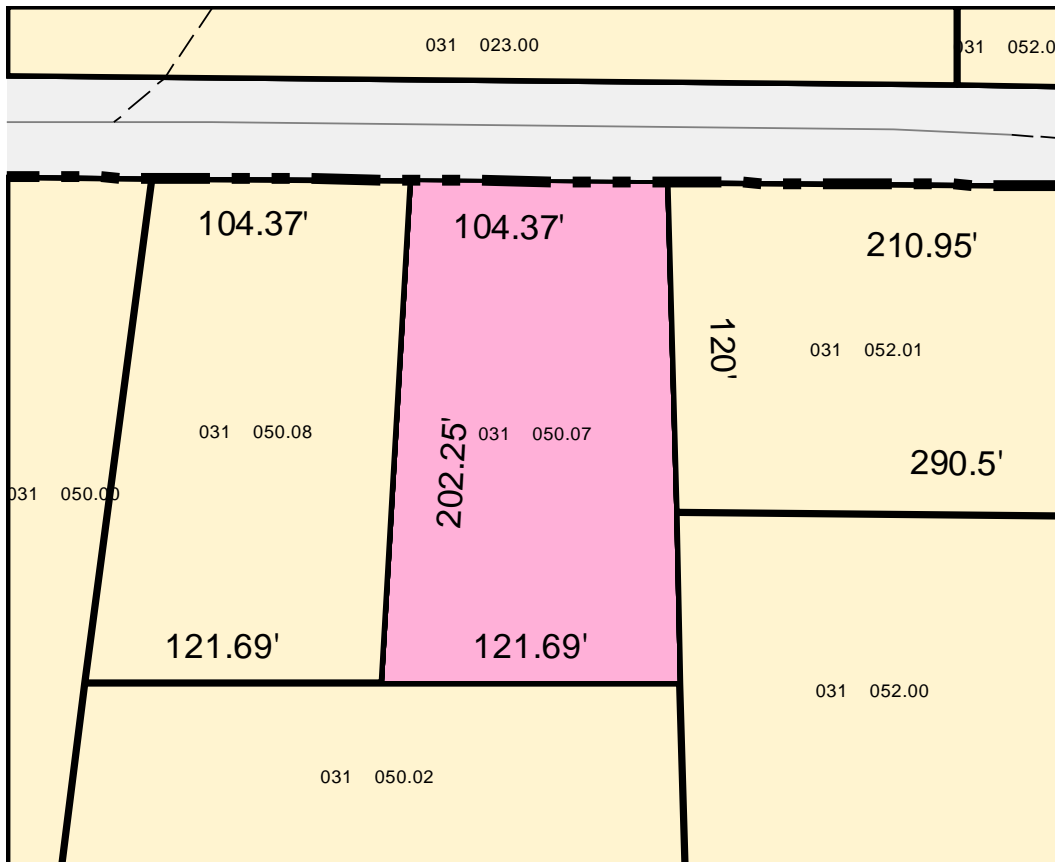
Sale Conducted For the Owners by

EAST TENNESSEE DEVELOPMENT & AUCTION CO.
2909 E. OAKLAND AVE. SUITE 103/PO BOX 4684
JOHNSON CITY, TN 37602

423-854-4999 www.etdac.com



ABSOLUTE AUCTION
SAT. OCT. 15TH 11:00 AM
DOUBLEWIDE ON PRIVATE LOT



Announcements made day of sale take precedence over all others